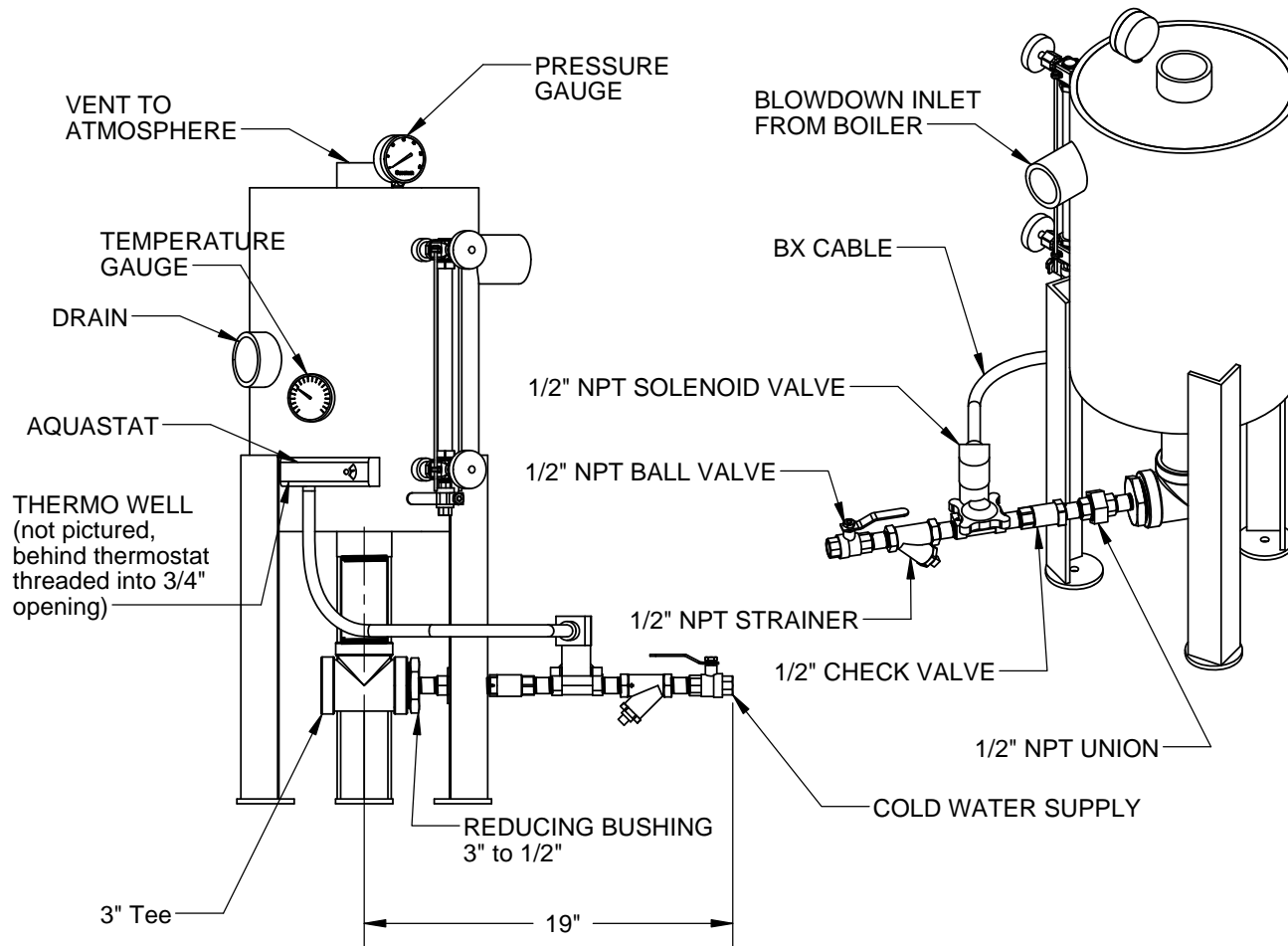


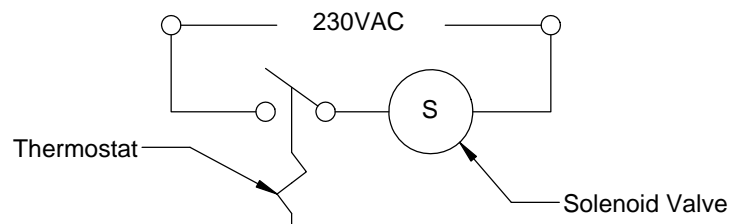
REV	DATE	ECN	DESCRIPTION OF CHANGE	AUTH
A	2/12/2015	X	UPDATED DRAWING	JPC



## Installation Instructions:

1. Install all piping onto drain on the bottom of the blowdown tank
2. Insert Thermowell into 3/4" opening
3. Insert aquastat probe into thermowell
4. Install aquastat on thermowell
5. Connect the solenoid valve to the aquastat controller as seen in the wiring diagram using BX cable
6. Connect the aquastat to 230VAC

## Wiring Diagram:



	NAME	DATE	SUSSMAN-AUTOMATIC CORPORATION 43-20 34TH STREET LONG ISLAND CITY NEW YORK 11101	
DRAWN	PT	8/22/2011	TITLE:	
ENG APPR.	X	X/X/X	<b>BDT COOLER INSTALLATION INSTRUCTIONS</b>	
DIMENSIONS ARE IN INCHES TOLERANCES: (EXCEPT AS NOTED) FRACTIONAL $\pm 1/64$ ANGULAR: $\pm 1^\circ$ DECIMAL $\pm .005$			SIZE <b>A</b>	DWG. NO. <b>BDT-COOLER</b>
			SCALE: 1:10	SHEET 1 OF 1