

Code	Description
VAL-5201	TS 5301 3/8" Auto Air Vent (excludes TS 56130)
VAL-5410	TS 56130 Auto Shut Off Cock for Auto Air Vents
VAL-5615	TS 5603 Auto Fill Valve (excludes TS 671)
VAL-5601	TS 671 Pressure Gauge 50mm bottom 1/4" BSP
VAL-5602	TS 681 Thermo -manometer 80mm bottom 1/4" BSP complete with 3/8 adaptor
VAL-5603	TS 682 Thermo -manometer 80mm rear 1/4" BSP complete with 3/8 adaptor
VAL-5126	TS 2114 Safety valve 1.5-5 BAR 1/4" BSP
VAL-5115	TS 702 Wall Mounting Manifold
VAL-5114	Will take up to a Extraxarem LP25 5B expansion tank on manifold with inhibit 1/4" auto shut off cock.
VAL-5020	TS 701 Combined Air Separator
VAL-5020	W 290 1/2" Drain valve for boilers, with hose fitting, plug and chain.
VAL-5020	50mm pressure gauge, 1/2" pressure relief valve, 1/2" auto-fill valve, 1/4" automatic air vent and drain kit

COPYRIGHT: This document and the copyright in this document remain the property of Cooke Industries Limited. No part of this document may be reproduced, stored in a retrieval system, or transmitted in any form or by any means, electronic, mechanical, photocopying, recording, or by any information storage and retrieval system, without the prior written consent of Cooke Industries Limited.

SCALE: NTS

DATE: 01/10/2010 **DATE:** 31/10/2010 **REV:** 0

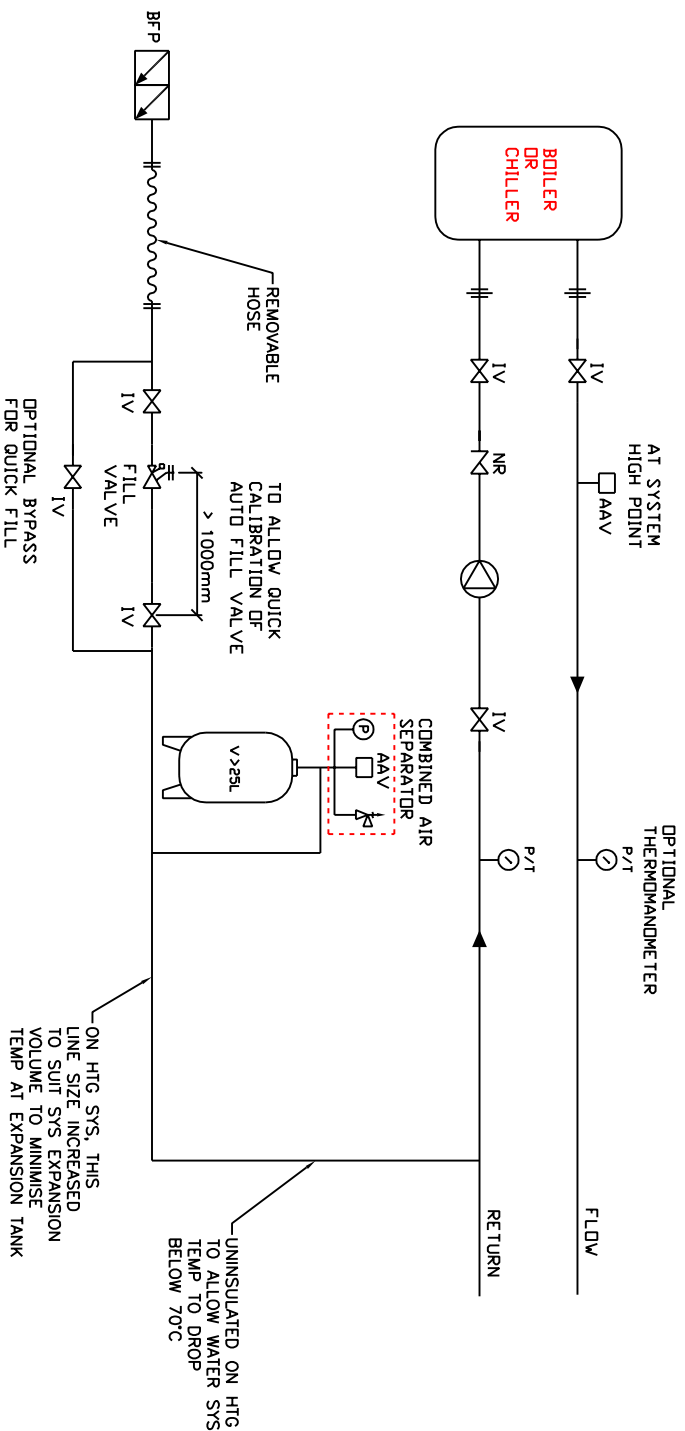
TITLE: NORTHVALE PIPING SCHEMATICS

EXPANSION TANK 25L OR LESS

PROJECT: NORTHVALE

COOKE INDUSTRIES

P O Box 12021, Penrose, Auckland 1135
31 Station Rd, Penrose, Auckland, NZ
Phone - 91 579 2181 Fax 06 - 91 579 2181
Email: sales@cookeindustries.co.nz



Code	Description
VAL-5201	TS 5301 3/8" Auto Air Vent (excludes TS 56130)
VAL-5410	TS 56130 Auto Shut Off Cock for Auto Air Vents
VAL-5515	TS 5503 Auto Fill Valve (excludes TS 671)
VAL-5601	TS 671 Pressure Gauge 50mm bottom 1/4" BSP
VAL-5602	TS 681 Thermo -manometer 80mm bottom 1/4" BSP complete with 3/8 adaptor
VAL-5603	TS 682 Thermo -manometer 80mm rear 1/4" BSP complete with 3/8 adaptor
VAL-5126	TS 2114 Safety valve 1.5-5 BAR % BSP
VAL-5115	TS 702 Wall Mounting Manifold Will take up to a Extravarem LR25 5B expansion tank on manifold with inbuilt 1/4 auto shut off cock.
VAL-5114	TS 701 Combined Air Separator
VAL-5020	W 290 1/4" Drain valve for boilers, with hose fitting, plug and chain.
FILL valve kit	50mm pressure gauge, 1/2" pressure relief valve, 1/2" auto-fill valve, 1/4" automatic air vent and drain

<p>COPYRIGHT: This document and the copyright in this document remain the property of Cooke Industries reproduced either in whole or in part by any means whatsoever without the prior written consent of Cooke Industries Limited.</p>		<p>SCALE: NTS</p>	
DRAWN: SV	APPROVED: AC	FILE REF:	
DATE: 01/10/2010	DATE: 31/10/2010	REV NO:	
TITLE: NORTHVALE PIPING SCHEMATICS EXPANSION TANK OVER 25L		PRODUCT: NORTHVALE	
<p>P O Box 12021, Penrose, Auckland 1135 31 Station Rd, Penrose, Auckland, NZ Ph (06) - 91 579 2189 Fax (06) - 91 579 2181 Email: sales@cookeindustries.co.nz</p>		REV 0	



NORTHVALE VAREM EXPANSION TANKS

Installation and Operation Instructions

General:

The Northvale Varem expansion tanks are manufactured according to the European Directive 97/23/EC and these instructions are made in conformity with this directive.

Application:

The water volume in heating and chilled water systems will vary subject to temperature changes, which increase or reduce the volume and the expansion tanks are used to take up this expansion and to prevent system over and under pressure.

The expansion tanks consist of a metal tank containing a flexible balloon membrane. The tank is pressurized and the system water is contained within the membrane.

Technical characteristics:

The technical characteristics of the Northvale Varem expansion tanks are displayed on the label affixed to each tank. This data includes - Code, Serial No, Production date, Volume, Maximum working temperature, Pre-charge and Maximum working pressure. The label must not be removed and the use of the expansion tank must conform within these limits.

Installation:

The Northvale Varem expansion tanks must be correctly sized and installed by specialised personnel. The tanks should be installed in the return line, securely fixed to the building structure and have a pressure relief valve fitted to ensure that the maximum working pressure does not exceed the pressure on the label.

Filling of the system should preferably be by use of a special filling valve. The valve should incorporate a pressure gauge as a guide for filling, a check valve for protection against risk of back flow, which could cause pollution of the water main and a preset pressure reduction feature to stop water filling upon reaching a preset pressure.

The filling valve should only be used for filling the system and have the isolating valve closed off during normal system usage. Continuous automatic operation can result in fresh water entering the system causing internal corrosion.

Maintenance:

Specialised personnel must carry out the maintenance.

The expansion tanks must be generally checked yearly, in particular to ensure that the pre-charge pressure corresponds with the label. **IMPORTANT:** To check the pre-charge the tank must be completely empty of water.

Safety precautions:

The Northvale Varem expansion tanks must be operated within the operating conditions noted on the label. The manufacturer takes no responsibility for damage to persons, places or objects, which result from the improper use, installation and/or functioning of the product or connected system.

Supplied by:

COOKE INDUSTRIES Ltd, 31 Station Road, Penrose, Auckland 1642
Phone: 09 579 2185 Fax: 09 579 2181 Email: sales@cookeindustries.co.nz