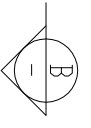
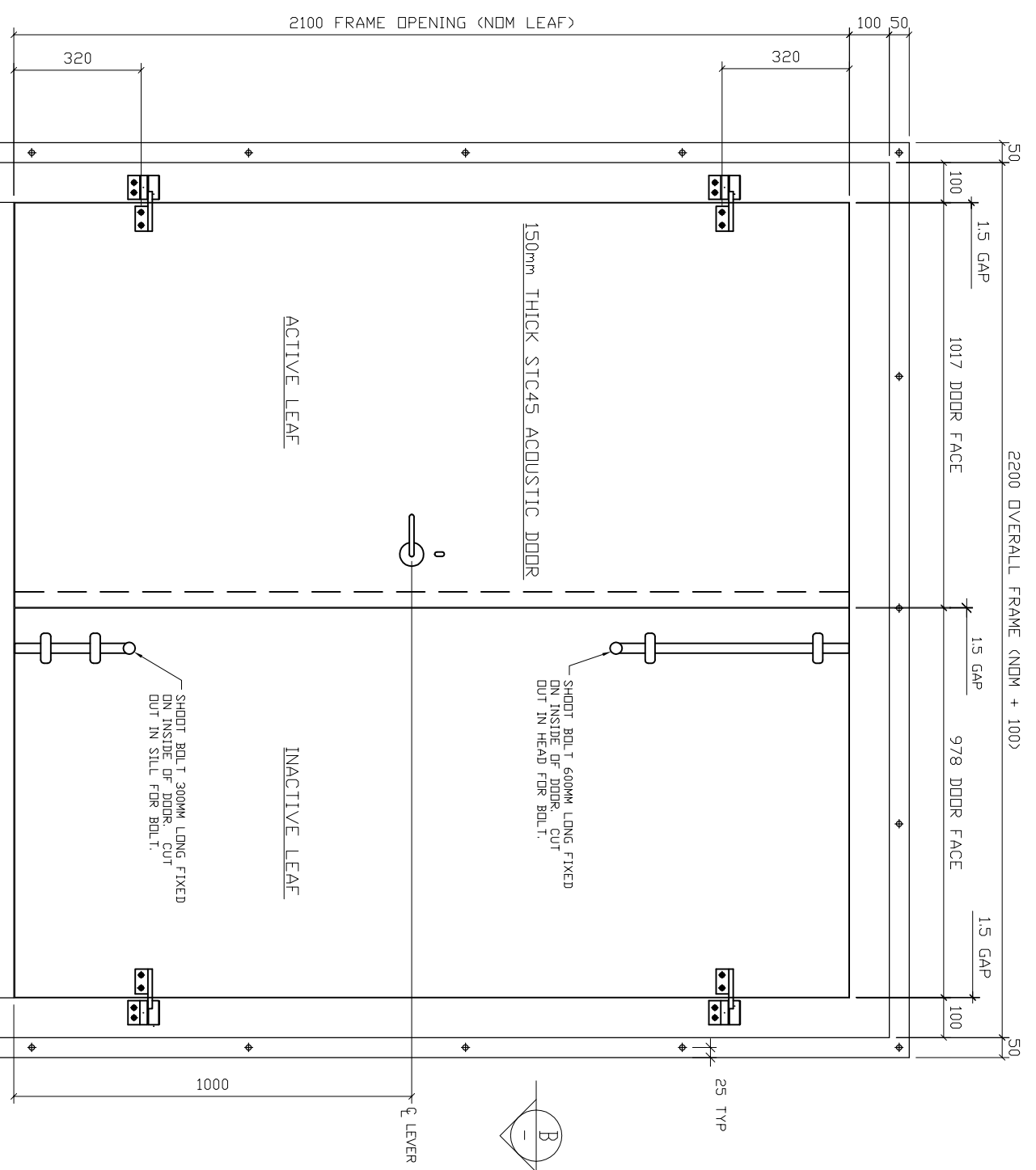
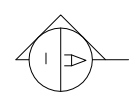


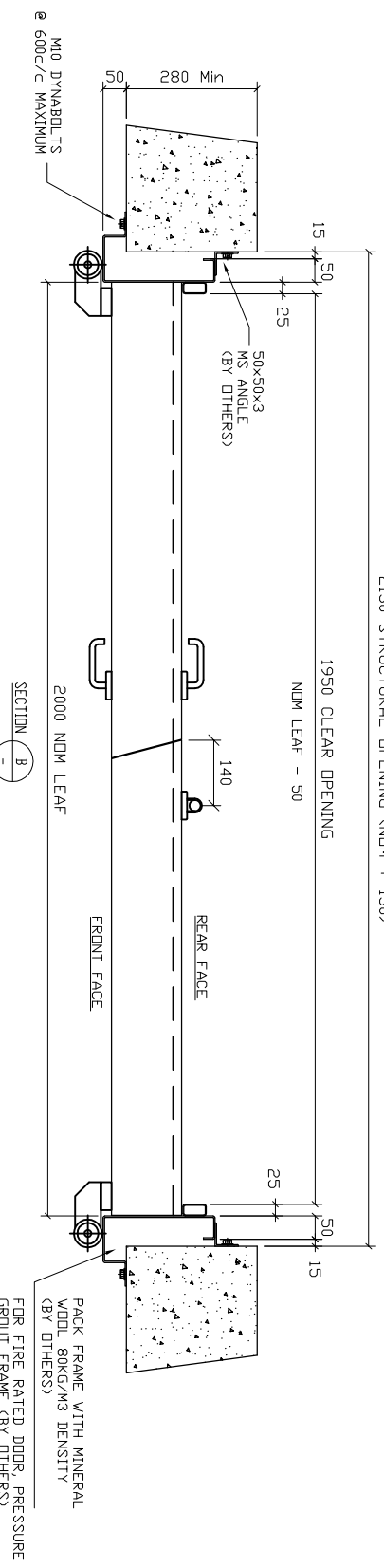
2200 OVERALL FRAME (NDM + 100)



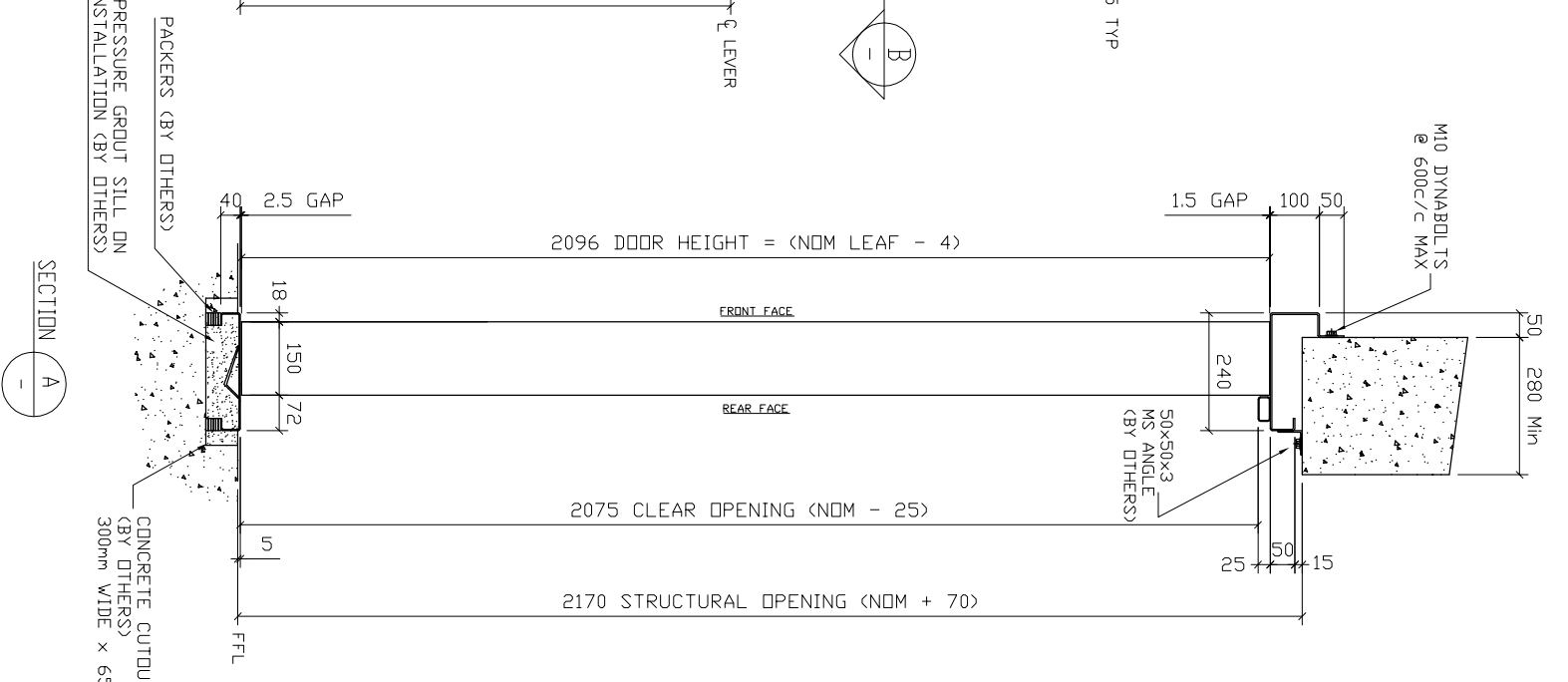
FRONT ELEVATION



2130 STRUCTURAL OPENING (NDM + 130)



SECTION B



SECTION A

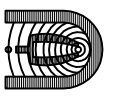
NOTES

1. DOOR LEAVES 150mm THICK STEEL CONSTRUCTION WITH PERFORATED METAL EDGES.
2. DOOR JAMBS & HEAD FROM 3mm GALV. SILL 2.5mm THICK 304 STAINLESS STEEL.
3. HINGES - NAP SILENTFLO ADJUSTABLE LIGHT DUTY BALL BEARING HINGES (4 OFF)
4. FINISH - FACTORY PRIME PAINT 20 um DFT ROZC. FT 13mm x 3mm FELT STRIPS AFTER PAINTING ON SITE (BY OTHERS). DO NOT FILL PERF HOLES WITH PAINT. DO NOT SPRAY PAINT PERF. METAL EDGES (USE BRUSH ONLY)
5. HARDWARE - PLS DELETE AS NECESSARY
HINGES (SPECIAL BALL BEARING TYPE BOLTED TO FRONT FACE)
LOCKWOOD LATCH (SPECIAL SPLINED FACE)
DEADLOCKING
HANDLES
SPINDLE
LOCKING CYLINDER
TURN KNOB
DOOR CLOSER
PULL HANDLES
HARDWARE FINISH -
6. WALL THICKNESS : 280mm Min
7. DOOR LD. :-
8. CLIENT :-
9. ORDER No :-
10. PROJECT :-
11. QUANTITY :-

REVD	NOT REVD	NONE
FRONT FACE	REV. FACE	NONE
SPIND	SPLITE	NONE
FRONT FACE	REV. FACE	NONE
FRONT FACE	REV. FACE	NONE
REAR FACE	PARALLEL	NONE
FRONT FACE	REV. FACE	NONE

STANDARD MATERIAL SCHEDULE		
ITEM	GALV.	S.S.
FRAME	✓	
LEAF CHANNEL	✓	
LEAF SKIN	✓	
PERF. METAL	✓	
SILL		✓
STIFFENERS	✓	

Copyright © : This document and the copyright in this document remain the property of Cooke Industries Limited. The content of this document may not be reproduced either in whole or in part by any means whatsoever without the prior written consent of Cooke Industries Limited.



NAP SILENTFLO
DESIGNERS & MANUFACTURERS OF NOISE CONTROL PRODUCTS
124 MONROE STREET, P.O. BOX 2004, CHRISTCHURCH 3102, NEW ZEALAND



COOKE INDUSTRIES
P O Box 12021, Penrose, Auckland 11135
31 Station Rd, Penrose, Auckland, NZ
PH (64 - 9) 579 2185 FAX (64 - 9) 579 2181
Email: sales@cookeindustries.co.nz

The: 150mm STC45 DYNA DOOR
Double Leaf Clockwise Opening
2000W x 2100H Nominal Size

Drawn:	Scale:	Drawing No:
SW	NTS	
Date: 18/07/01	Original Size: A3	
Checked: AC		
Date: 18/07/01		
File Ref: DoorGA.dwg		
Revision: A		