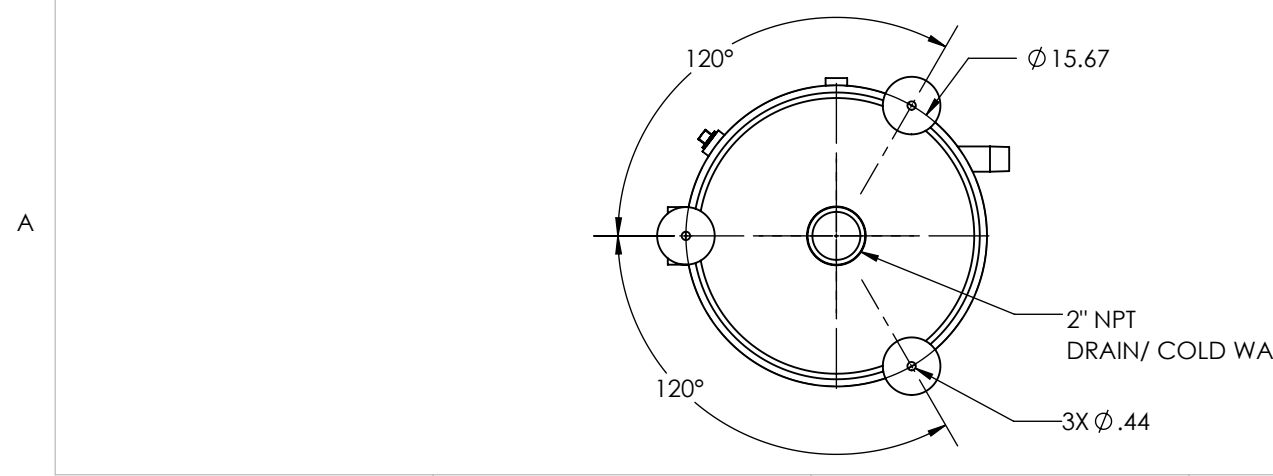
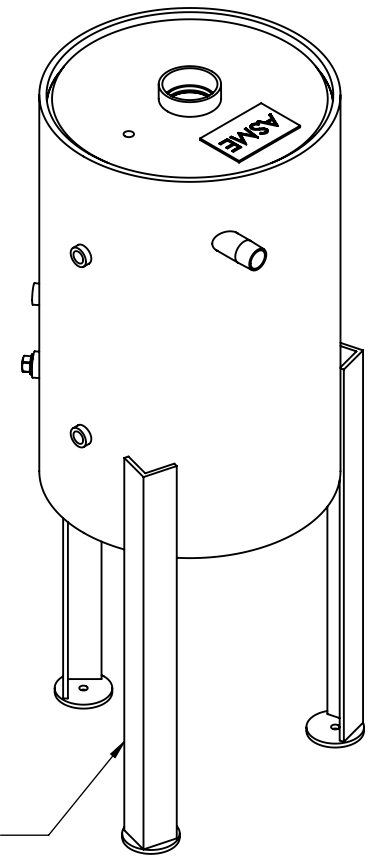
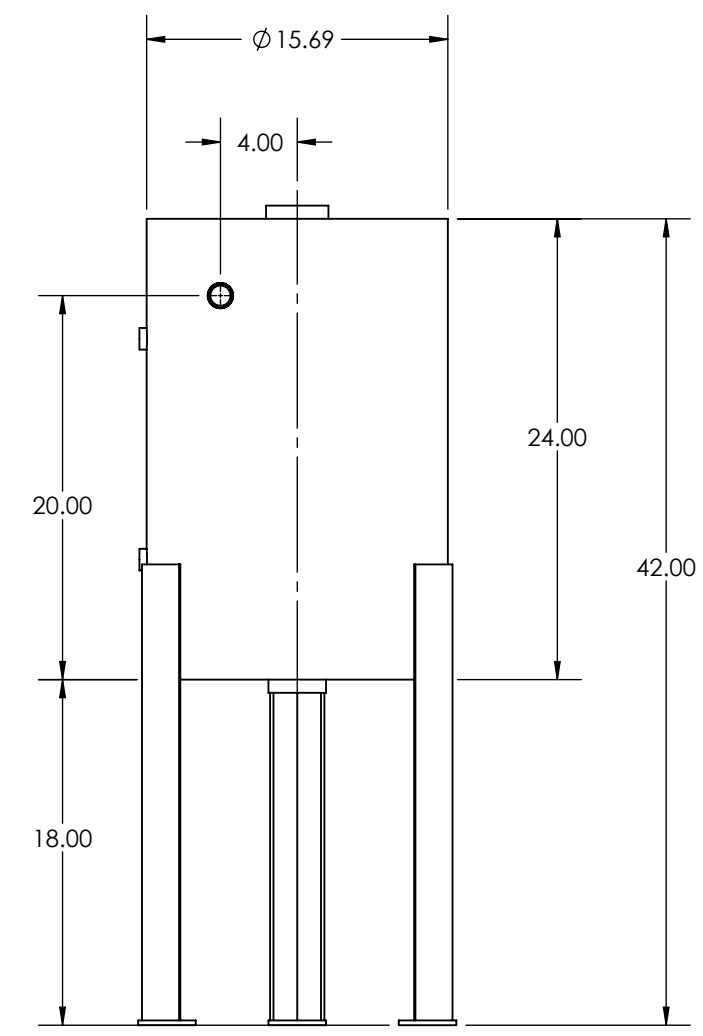
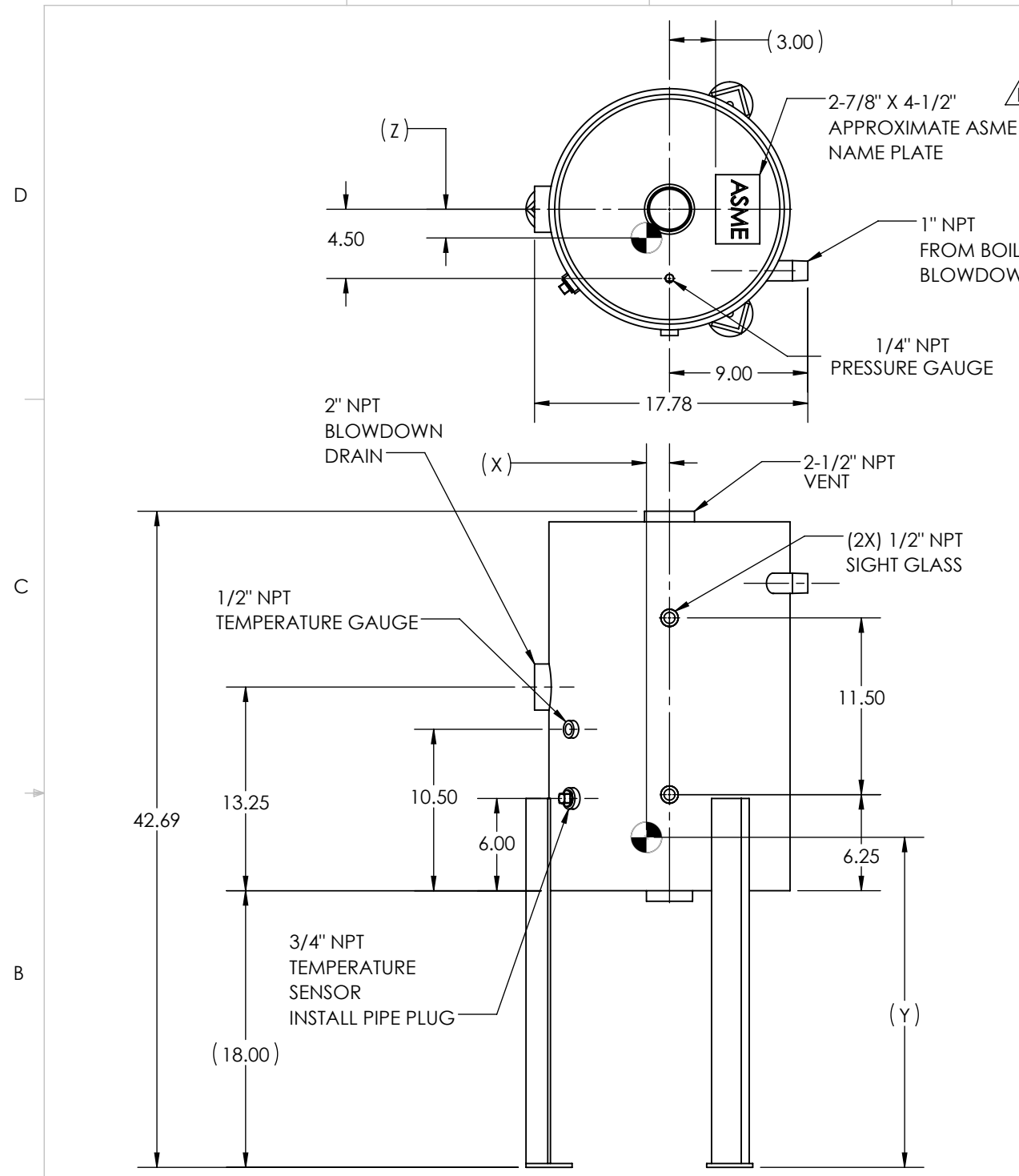


REV	DATE	ECN	DESCRIPTION OF CHANGE	AUTH
A	9/10/2020	3615	REDRAWN PER MFG DRAWINGS	E.Z
B	1/27/2021	3669	UPDATED DRY & WET CG'S, CHANGED DRY WEIGHT FROM 119LBS TO 205LBS, WET WEIGHT FROM 146LBS TO 277LBS, AND ADDED NOTE 7	E.Z

DRY CG			WET CG			BOILER HP REF
X	Y	Z	X	Y	Z	
0.27	28.47	0.034	0.20	27.42	0.025	6-25
DRY WEIGHT: 205 LBS			WET WEIGHT: 277 LBS			

NOTES:

- BUILT IN ACCORDANCE WITH THE CURRENT EDITION OF THE ASME BPVC SECTION VIII-1
- ASME CERTIFICATION MARK WITH "U" DESIGNATOR.
- DESIGN PRESSURE 65PSI AND DESIGN TEMPERATURE 312°F
- MDMT: -20°F AND CORROSION: 0"
- HYDROSTATIC TEST PRESSURE 85PSI @70°F
- PAINT SPECIFICATION: SHERWIN-WILLIAMS ALLIED BLUE #F75L504
- SUPPLIED WITH PRESSURE GAUGE, TEMPERATURE GAUGE, AND WATER LEVEL GAUGE



NAME	DATE	SUSSMAN-AUTOMATIC CORPORATION 43-20 34TH STREET, LONG ISLAND CITY, NEW YORK 11101
DRAWN E.Z	9/10/2020	
ENG APPR. FE	10/12/2020	
TITLE:		<b>BLOWDOWN TANK ASME 42"</b>
SIZE <b>B</b>	DWG. NO. <b>BDT-ASME42</b>	
DIMENSIONS ARE IN INCHES TOLERANCES: (EXCEPT AS NOTED) FRACTIONAL $\pm 1/64$ ANGULAR: $\pm 1^\circ$ TWO PLACE DECIMAL $\pm .02$		SCALE: 1:10
		SHEET 1 OF 1