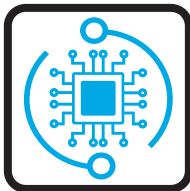


PCSL - 1 WAY SLIM CASSETTE



FEATURES

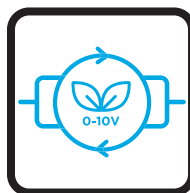
CONTROL FLEXIBILITY



Two types of control system: Intelligent control board (I-Control) controlled via Infra-red handset and/or Intelligent wired wall pad or Flexible control (W-Control) permitting operation with external thermostat applications both controls allows configuration for 2 or 4-pipe settings.

Please refer to page 14 for further information on controls.

ENERGY EFFICIENT MOTORS

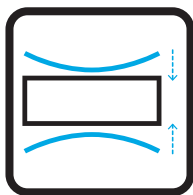


EC motors allow the tangential blower wheel to operate at optimum airflow performance, energy efficiency and quiet operation. EC motors include driven control PCB, constant torque, permanent magnet and 3 speeds pre-set or modulating with a 0-10 VDC signal for precise air balancing control.

QUIET OPERATION



Tangential fans mounted on anti-vibration supports provide smoother and consistent airflows, resulting in optimal acoustic comfort. This setup reduces noise and vibration, creating a quieter and more pleasant environment.



SLIM DESIGN CASING

With only 152mm high, it is especially recommended for residential and hospitality applications with lower fake ceilings to maximize the spaces. The front panel is made from high impact polystyrene RAL 9010 ensuring durability and a sleek appearance.



WATER COILS

Built with seamless copper tubes and headers, mechanically expanded into corrugated aluminium fin material for a permanent primary to secondary surface bond. Tested at 35 bar, with maximum operating limits at 20 bar.



READY TO INSTALL

The one way cassette is offered as a complete package including as standard items such as an integrated condensate pump, Internal drain pan, NBR insulation and G2 (MERV 4) filter. Furthermore, we offer multiple optional accessories.

KEY POINTS

- Auto Dynamic Balancing with I-Control
- Integrated Sauermann Condensate Pump
- Low energy consumption
- Compact design 152mm height



ACCESSORIES

- IR Handset or Wired Wall Pad (Only with I-Control)
- Thermostat Controller
- Electric heater up to 1kW
- 2 or 3 Way On/Off & Modulating Valves

*Please refer to page 80 for further information and accessories.

TECHNICAL SPECIFICATIONS

Hydronic 1 way Slim Cassette, 2 Pipe with **EC Motor**

UNIT GENERAL SPECS	PCSL-[Size]-V-ECM			01	02
	Configuration			2-pipe	
	Number of Fan Blowers			Single	
	Power Supply (V/Ph/Hz)			220 - 240/1/50 - 60	
AIR	Total Air Flow	H	m3/h	450	600
		M		350	450
		L		150	250
COOLING	Total Cooling Capacity	H	kW	2.56	3.19
		M		2.12	2.56
		L		1.05	1.62
	Sensible Cooling Capacity	H		1.79	2.27
		M		1.47	1.79
		L		0.73	1.11
HEATING	Heating Capacity	H	kW	2.6	3.21
		M		2.15	2.6
		L		1.08	1.65
	Max. Electric Heater Capacity			0.5	1
SOUND	Pressure Level (H/M/L)		dB(A)	35/31/26	38/35/29
	Power Level (H/M/L)			44/40/35	47/44/38
ELECTRICAL	Power Input	H	W	13	22
		M		8	13
		L		4	5
	Running Current (H)		A	0.11	0.19
HYDRONIC	Cooling Water Flow Rate	H	L/h	439	547
		M		363	439
		L		180	278
	Cooling Pressure Drop	H	kPa	30.9	61.1
		M		29.3	41.2
		L		8.3	18.1
	Heating Water Flow Rate	H	L/h	445	551
				368	445
		L		185	283
	Heating Pressure Drop	H	kPa	26.7	39.2
		M		19	26.7
		L		6.4	11.8

EUROVENT TESTING CONDITIONS:

a. Cooling mode (2-pipe):

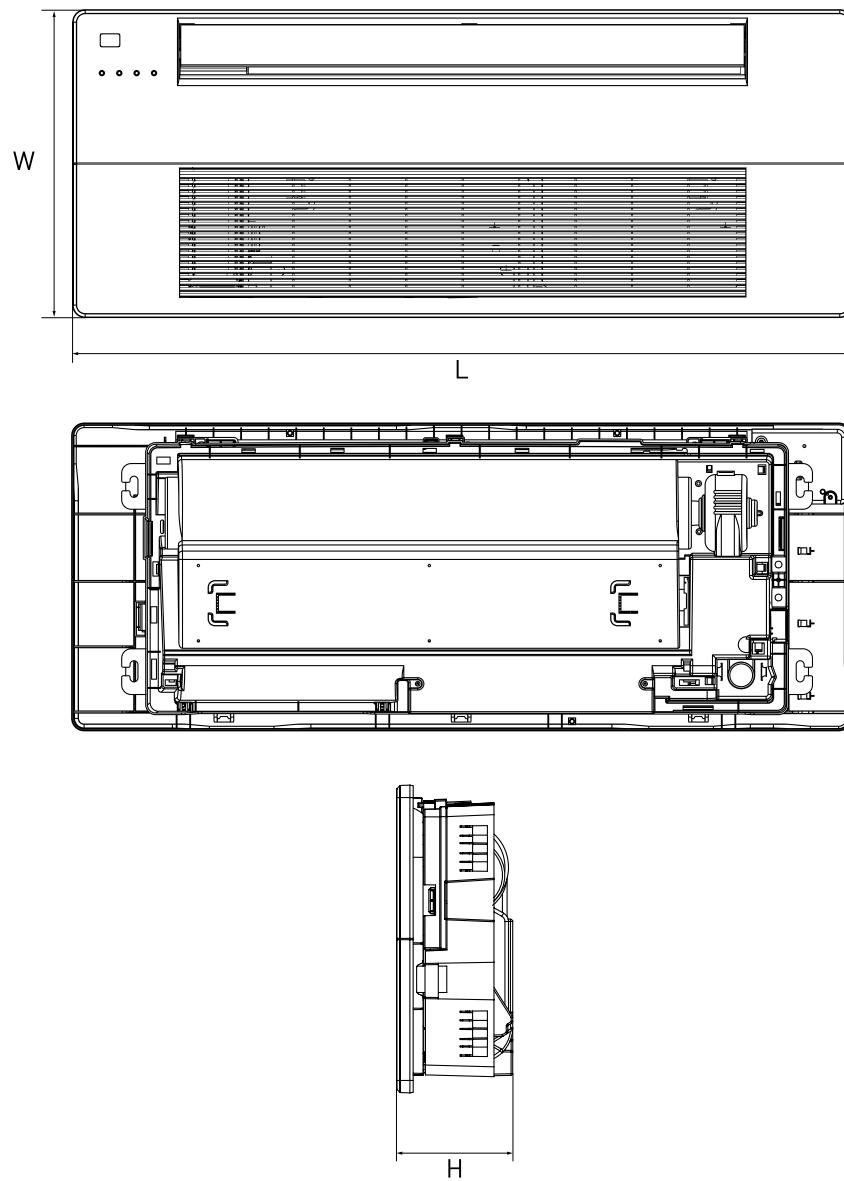
- Return air temperature: 27°C DB/19°C WB
- Inlet/ outlet water temperature: 7°C/ 12°C

b. Heating mode (2-pipe):

- Return air temperature: 20°C
- Inlet water temperature: 45°C/40°C

* Please refer to www.eurovent-certification.com for further information.

DIMENSIONAL DRAWINGS, DATA & WEIGHTS



PCSL				01		02	
CONSTRUCTION AND PACKING DATA	Water Connections	Type		PT (Threaded Female)			
		In	mm [in]	12.7 [1/2]			
		Out					
	Condensate Drainage		25.4 (1)				
	Dimensions	L	mm	1182			
		W		427			
		H		152			
	WEIGHT	Net	kg		13.5		