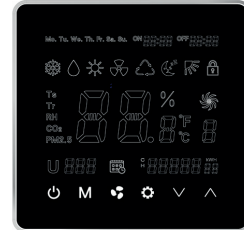


01. CONTROLLERS

[WWP-V3] WIRED WALL PAD CONTROL (AVAILABLE WITH I-CONTROL)

Features: 7 days ON/OFF timer program | Addressable Main and Secondary units allowing control of up to 32 Secondary units via a single Main Unit with set or check of each unit parameters individually | Error display with addressable error diagnostic (Main unit Wall Pad displays Secondary unit address and error type) | One-Touch Global Control (Global Control Main Unit Wall Pad controls all units in the group) | Onboard Room Air Temperature Sensor.



[IRHS-V1] REMOTE INFRARED HANDSET (AVAILABLE WITH I-CONTROL)

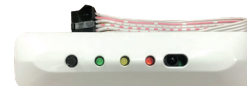
With Global Control functionality for Main and Secondary Unit groups.



02. CONTROL OPTIONS

ABS LED RECEIVER

IR receiver in ABS housing with up to 180cm (70in) length prewiring, which can be connected with TOTAL controls only. LED lights show working mode or error mode.



DIFERENTIAL PRESSURE TRANSDUCER

This device converts the air pressure difference to a proportional electrical output (0-10 VDC/0-5 VDC/4-20 mA). It is suitable for detecting abnormal airflow at the fan coil unit for safety (cutting off electric heater) or maintenance (air filter cleaning) purposes.



03. VALVE KITS

2 OR 3 WAY BYPASS THERMOELECTRIC VALVES

2-way or 3-way valve bodies with ON/OFF or modulating actuators integrated with copper piping connection kits.

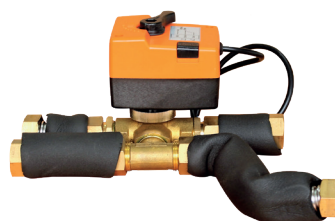
* Piping connection kits vary among the different ranges.



2 OR 3 WAY BYPASS BALL VALVES

2-way or 3-way bypass ball valve bodies with motorized or 24VAC modulating actuators integrated with Copper Piping Connection Kits.

* Piping connection kits vary among the different ranges.



04. UPGRADED FILTERS

All our fan coils come with a nylon filter installed as standard. If you want an upgrade on those filters, you can choose between:

- **G4 (MERV 8)**
Available with 3M HAF grade.
- **F8 (MERV 14)**



Model	Standard	Optional	
	G2- MERV 4	G4-MERV8	F8-MERV14
PHW	1/8"	-	-
PCGH-3R	1/8"	3/8"	-
PDWSL	1/4"	1/4"	-
PDWA	1/4"	1"	-
PDWC	1/4"	1"	-
PDWD	1"	1"	-
HAHU	1"	1"	2"
VAHU	1"	1"	2"
PFWBC-VAR	1/8"	-	-
PFWBC-HAR	1/4"	1/4"	-
PFWB	1/4"	-	-
PFWSLN	1/8"	-	-

05. ELECTRIC HEATERS

PTC ELECTRIC HEATER KIT

With 2-stage safety cut-out and can be configured as booster heaters or primary heaters.



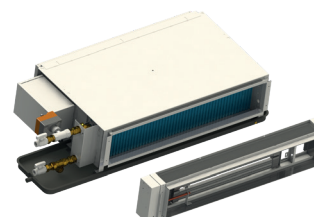
TUBE ELECTRIC HEATER KIT

With 2-stage safety, cut-outs can be configured as booster heaters or primary heaters. It can be easily installed on-site or in stock via plug-and-play wiring and brackets.



MODULE ELECTRIC HEATER KIT

The electric heater module is supplied for winter heating as an alternative to the auxiliary hot water coil. We offer a complete range of electric heaters kits, easy to connect to control box, with mounting fixture. The electric heater configuration is selectable by the DIP switch on the internal control board.



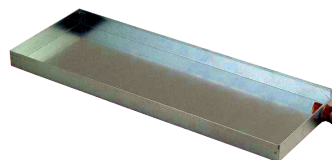
Model	EH KIT (kW)		
	Module	PTC	Tube
PHW	-	0.5 to 1.5	-
PCGH-3R	-	-	0.5 to 4
PCSL	-	0.5 to 1	-
PDWSL	0.75 to 3	-	-
PDWA	1 to 6	-	-
PDWC	1.5 to 9	-	-
PDWD	3 to 9	-	-
HAHU	4.5 to 9	-	-
VAHU	4.5 to 9	-	-
PFWB(C)	-	0.5 to 3	-
PFWSLN	-	0.5 to 1.5	-

* Non-standard electric heater sizes available under request. Contact us for further information.

06. DRAIN PANS

STAINLESS STEEL DRAIN PAN

To choose between left or right side coil connections.



PAINTED STEEL DRAIN PAN

For Horizontal installations: Painted steel drain pans for built-in horizontal floor standing fixed wall installations with right or left-sided coil connections.



For Vertical installations: Painted steel drain pans for suspended ceiling installations with right or left-sided coil connections.

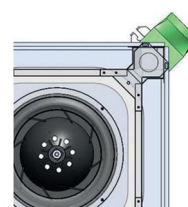
Model	ABS Plastic	Powder-coated Steel	Stainless Steel
PHW	Standard - Integrated	-	-
PCGH-3R	Standard - Integrated	-	-
PCSL	Standard - Integrated		
PDWSL	-	Standard - Integrated	Optional
PDWA	-	Standard - External	Optional
PDWC	-	Standard - External	Optional
PDWD	-	Standard - Integrated	Optional
HAHU	-	Standard - Integrated	Optional
VAHU	-	Standard - Integrated	Optional
PFWB(C)	-	Standard - Integrated	Optional
PFWSLN	-	Standard - Integrated	Optional

07. FLANGES

FOR FRESH AIR

Allows up to 15% of unit airflow up to a maximum of 100m³/h as fresh air intake (per connection).

The PCGH-3R Cassette comes with knock out fresh air connection holes. ABS plastic flanges use only two screws for fixture to unit.



FOR BRANCH DUCT

For delivery of treated air to adjacent spaces with 2 connectors per single fan model. Available for PCGH-3R Cassette ranges.



08. NBR INSULATION

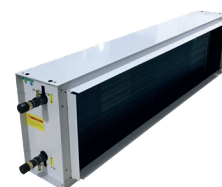
All of our fan coils are equipped with NBR plastic foam standard insulation. We do offer an optional upgrade for projects that require higher levels of insulation, which contributes to maintaining thermal performance and improves sound attenuation.



Model	Standard (mm)	Optional (mm)
PHW	5	-
PCGH-3R	5	-
PCSL	5	-
PDWSL	5	10
		15
		25
PDWA	5	10
		15
		25
PDWC	5	10
		15
		25
PDWD	15+25	-
HAHU	10+25	-
VAHU	10+25	-
PFWB(C)	5	-
PFWSLN	5	-

09. AUXILIARY HEATING COILS

To choose for either one or two rows, depending on your specific heating project requirements.



Model	+ 1 Row	+ 2 Row
PDWSL	✓	-
PDWA	✓	✓
PDWC	✓	-
PDWD	✓	✓
HAHU	-	✓
VAHU	-	✓