

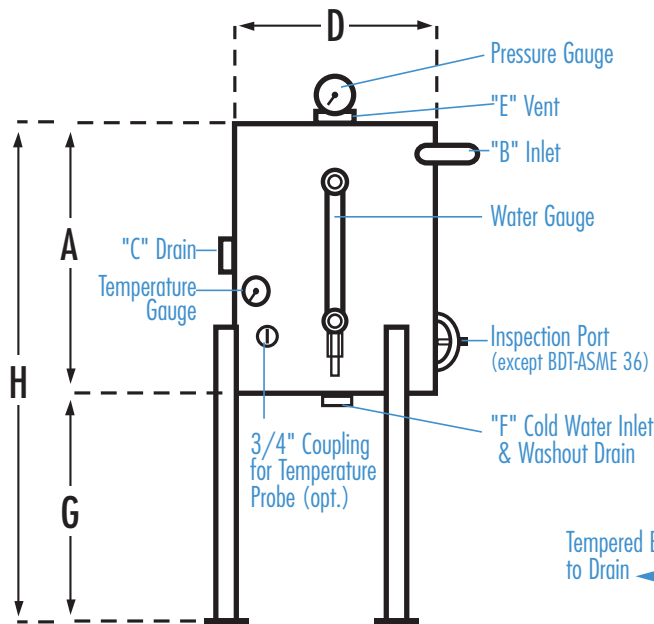


## Blowdown Separator Tanks

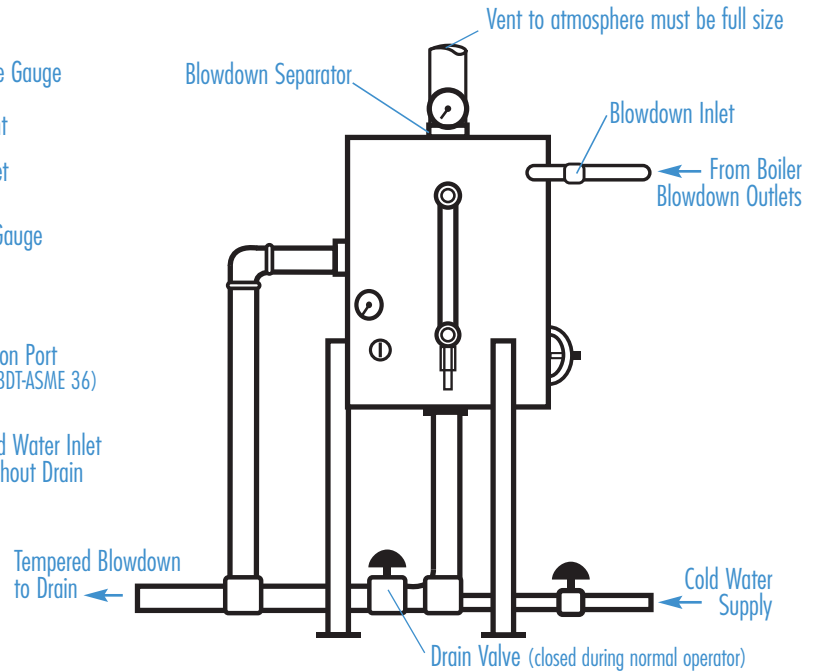
Specifications and Data

Model BDT-ASME 36, 42, 44, 48, 54

### Dimensions and Features



### Suggested Hook-Up to Boiler



	BOILER HP	DIMENSIONS								SHIPPING WEIGHT
		A	B	C	D	E	F	G	H	
BDT-ASME 36	0-5	18"	1"	2"	12"	2"	2"	14"	32"	125
BDT-ASME 42	6-25	24"	1"	2"	18"	2-1/2"	2"	18"	42"	230
BDT-ASME 44*	0-20	26"	1"	2"	18"	2-1/2"	2"	18"	44"	300
BDT-ASME 48	26-59	30"	1-1/4"	2"	16"	3"	2"	18"	48"	280
BDT-ASME 54	60-100	38"	1-1/2"	3"	18"	4"	2"	18"	54"	290

\*Item has CRN for Canadian market.

The Sussman Separator design incorporates a water seal at the outlet which permits the operator to introduce cold water from the bottom to mix with the hot water and boiler steam blowdown in the separator. This reduces the outlet temperature to a level that makes it safe for discharge.

Note: 1BHP is approximately 10KW.

Maximum Boiler Working Pressure: 250 psi  
Maximum Blowdown Separator Pressure: 65 psi

Blowdown Separators are sized in accordance with National Board Standards

### Standard Equipment

- 0-100 lb. Pressure Gauge
- 0-200° Temperature Gauge
- Water Level Gauge

Constructed in accordance with Section VII Division I ASME Boiler & Pressure Vessel Code

