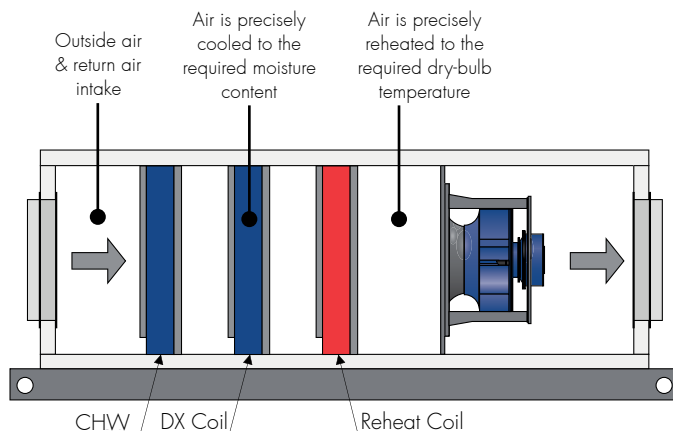
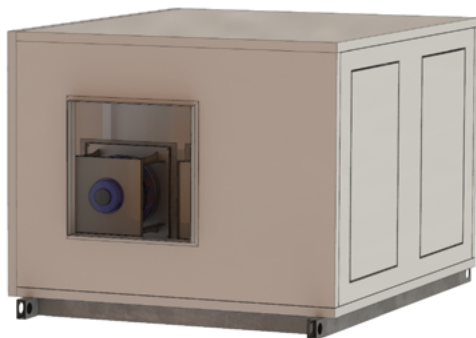


PCU-N-H 20

Technical Data



Contact your Air Change representative for a psychrometric unit selection

Airflow

Supply Air	2000 l/s (nominal)
Outside Air	0 - 100% as per project requirements

Refrigeration

Cooling Capacity	Sized to project requirements
Supply Air Moisture Content	CHW dependent
Cooling Stage 1	CHW Coil (primary cooling stage)
Cooling Stage 2	DX Coil (capacity as per reheat stage)
Reheat Stage	Hot Gas Reheat Coil (modulating)
Compressor Type	Variable Speed Scroll (Brushless DC Inverter)

Refrigerant	R-410A
Reverse Cycle	N/A

Fans

Type	EC Plug
------	---------

Supply Air

Total Fans	x2 (nominal selection*)
Nominal Power	2.5 kW ea. (nominal selection*)
Fan Diameter	350 mm (nominal selection*)
Fan Speed (max.)	2970 RPM (nominal selection*)
Motor Efficiency Class	IE4
Ingress Protection Class	IP54
Impeller Construction	Non-metallic Composite
Max. External Static Press.	Approx. 1050 Pa @ 2000 l/s
Speed Control	Integrated Constant Volume Control or via External Speed Signal

*Supply air fan selection options are available.

Fans

Type	N/A
Total Fans	N/A
Nominal Power	N/A
Fan Diameter	N/A
Fan Speed (max.)	N/A
Motor Efficiency Class	N/A
Ingress Protection Class	N/A
Speed Control	N/A

Condenser Air

Electrical & Controls

Electrical Input	415 V / 3 ph / 50 Hz
Full Load Amps	Refer to PCU-N-H 20 electrical page
Controls	ClimaSync™ Control System included (refer to PCU ClimaSync™ page)

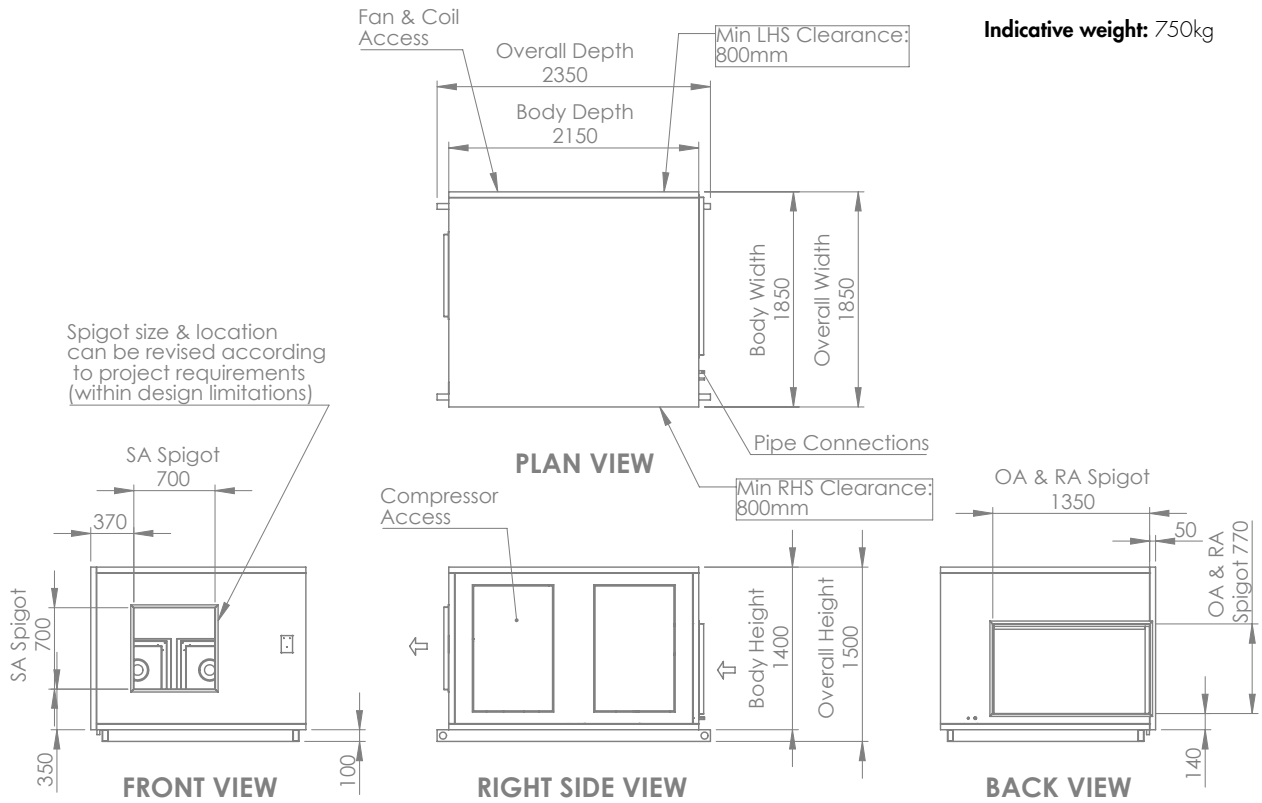
Cabinet

Weatherproof	Yes
Panel Construction	50 mm PIR Sandwich Panel (FM Approved 4880/4881 - Class 1)
Panel Finish	Colorbond "Surfmist"
Panel R-Value	2.63 K.m ² /W
Panel Joiner Material	UV Resistant Polymer
Base Frame	Galvanised Steel RHS with Lifting Lugs
Condenser Configurations	N/A
Filter Section	Optional
Filtration Grade	As per project requirements

PCU-N-H 20

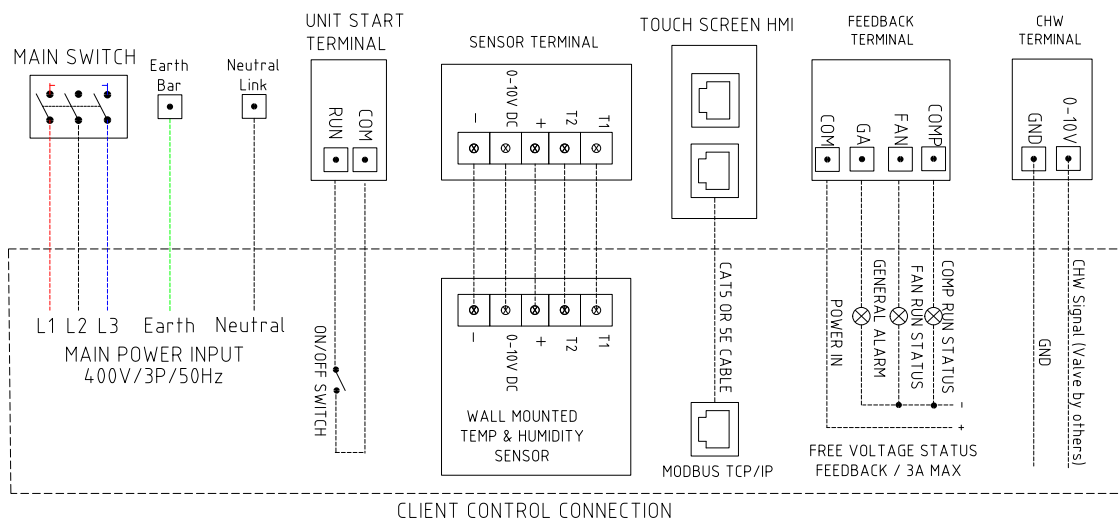
Dimensions & Electrical

Standard Dimensions (optional Filter Section not shown)*



*Dimensions and weight are subject to change, depending on project requirements. Refer to project certified drawings for finalised details.

Wiring Diagram & Electrical Input†



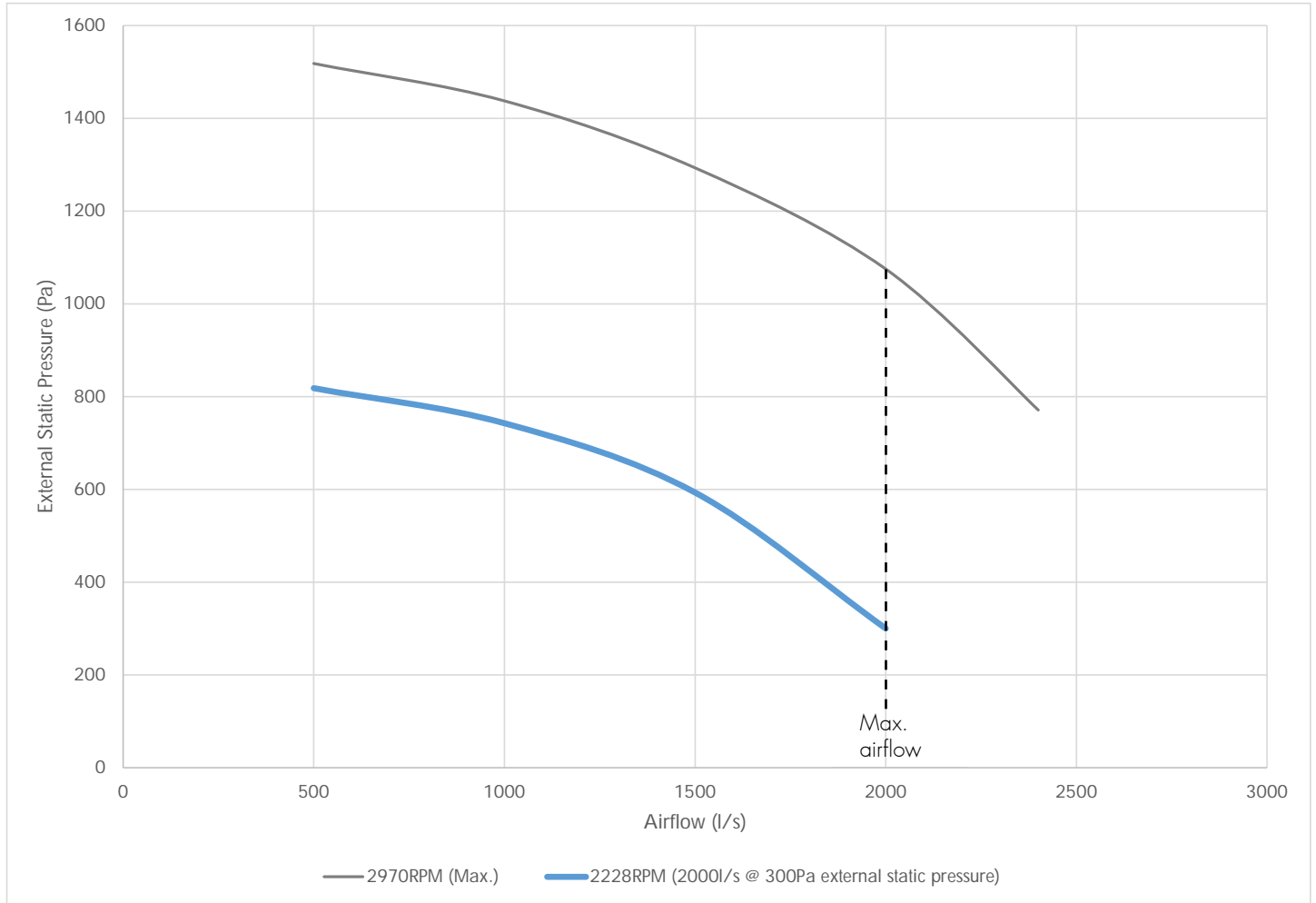
Indicative Electrical Input	
Voltage / Phases / Frequency	415V / 3ph / 50Hz
Full Load Amps	25A

†Electrical input and connection details are subject to change, depending on project requirements. Refer to project certified electrical diagrams for finalised details.

PCU-N-H 20

Airflow & Noise

Supply Air Fan Curve*



*Fan curve makes allowance for internal pressure drop of unit (excluding filters). This pressure drop is subject to change, depending on project requirements. Supply air fan selection options are available.

Supply Air Fan Acoustics (Sound Power)†

2000l/s @ 300Pa External Static Pressure									
Inlet									
Frequency (Hz)	sum	63	125	250	500	1000	2000	4000	8000
A-weighted (dB)	77	42	52	70	71	69	71	68	64
Non A-weighted (dB)	81	67	67	78	75	69	70	67	65
Outlet									
Frequency (Hz)	sum	63	125	250	500	1000	2000	4000	8000
A-weighted (dB)	83	44	54	72	74	79	78	73	68
Non A-weighted (dB)	85	69	69	81	77	79	77	72	69

†Noise data considers supply air fans only, without attenuation by the cabinet. Filter pressure drop to be factored into the 300Pa external static pressure.